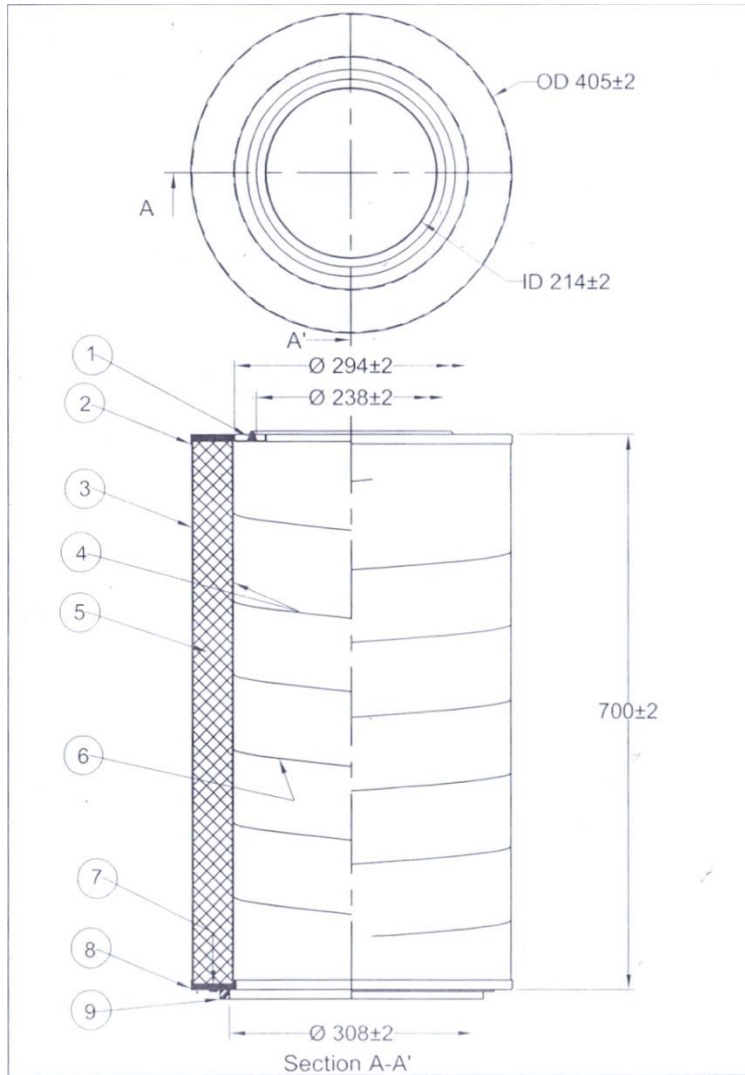


AIR FILTER ELEMENT BIG



9	1 No.	GASKET	SEAMLESS CLOSE CELL NEOPRENE
8	1 No.	BOTTOM CAP	CRCS IS:513-D, GALVANIZED
7	As Req'd	END SEALING	THERMOSETTING ADHESIVE
6	6 Line	Pleat Separator	HOTMELT SPIRAL BEAD
5	24.53 Mtr ²	MEDIA	MOISTURE RESISTANT BLEND OF SYNTHETIC & CELLULOSE BASE (IMPORTED)
4	1 No.	OUTER RETAINER	MS FLAT EXPANDED METAL, GALVANIZED, 72% OPEN AREA.
3	1 No.	INNER RETAINER	MS FLAT EXPANDED METAL, GALVANIZED, 72% OPEN AREA.
2	1 No.	TOP CAP	CRCS IS:513-D, GALVANIZED
1	1 No.	GASKET	SEAMLESS CLOSE CELL NEOPRENE
Item	Qty	Description	Size / Material

1. Filter Media is a blend of synthetic and cellulose fibres having water replenishing characteristic & very low operating pressure drops rise in foggy condition.
2. Zinc plated metal end caps and liners to provide structural durability.
3. Dimple pleating to ensure uniform pleat spacing.
4. hotmelt spiral beading inside & outside of the filters to keep pleats in place.
5. Flow : 354400 M3/Hr. per set (168 Pair)
6. Average arrestance as per EN-779:2002 - Better than 99.6%
7. Initial pressure drop - 18 mm w.c.
8. Nacl capture efficiency as per ARAMCO specification : 99.95%
9. Filter Efficiency : 99.6 % to 99.9% for particles 1.4 to 1.6 micron

Filter element type : HE 524702
Media area : 18 sq.m/ element
Nominal size : 324mm O/ Dia x 211mm I/ Dia x700mm lg
Approx weight : 7.2 Kg

Filter element type : HE 524712
Media area : 37 sq.m/ element
Nominal size : 405mm O/ Dia x 214mm I/ Dia x700 lg
Approx weight : 12.7 Kg

Gasket : Neoprene

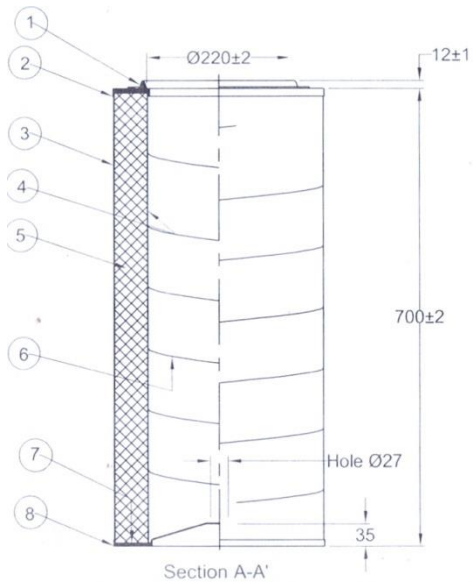
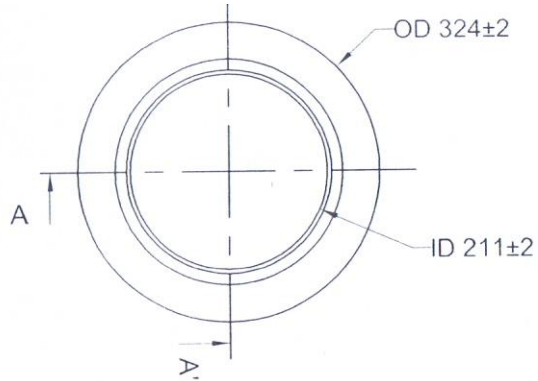
The above dimensions are as per drawing available. The weight should not exceed as indicated for both the sizes.



01/05/2020

(SURANJAN SARKAR)

AIR FILTER ELEMENT SMALL



8	1 No.	BOTTOM CAP	CRCS IS:513-D, GALVANIZED
7	As Req'd	END SEALING	THERMOSETTING ADHESIVE
6	6 Line	Pleat Separator	HOTMELT SPIRAL BEAD
5	18 Mtr ²	MEDIA	MOISTURE RESISTANT BLEND OF SYNTHETIC & CELLULOSE BASE (IMPORTED)
4	1 No.	OUTER RETAINER	MS FLAT EXPANDED METAL, GALVANIZED, 72% OPEN AREA.
3	1 No.	INNER RETAINER	MS FLAT EXPANDED METAL, GALVANIZED, 72% OPEN AREA.
2	1 No.	TOP CAP	CRCS IS:513-D, GALVANIZED
1	1 No.	GASKET	SEAMLESS CLOSE CELL NEOPRENE
Item	Qty	Description	Size / Material

1. Filter Media is a blend of synthetic and cellulose fibres having water replenishing characteristic & very low operating pressure drops rise in foggy condition.
2. Zinc plated metal end caps and liners to provide structural durability.
3. Dimple pleating to ensure uniform pleat spacing.
4. hotmelt spiral beading inside & outside of the filters to keep pleats in place.
5. Flow : 354400 M3/Hr. per set (168 Pair)
6. Average arrestance as per EN-779:2002 - Better than 99.6%
7. Initial pressure drop - 18 mm w.c.
8. Nacl capture efficiency as per ARAMCO specification : 99.95%
9. Filter Efficiency : 99.6 % to 99.9% for particles 1.4 to 1.6 micron

Filter element type : HE 524702
Media area : 18 sq.m/ element
Nominal size : 324mm O/ Dia x 211mm I/ Dia x700mm lg
Approx weight : 7.2 Kg

Filter element type : HE 524712
Media area : 37 sq.m/ element
Nominal size : 405mm O/ Dia x 214mm I/ Dia x700 lg
Approx weight : 12.7 Kg

Gasket : Neoprene

The above dimensions are as per drawing available. The weight should not exceed as indicated for both the sizes.



01/05/2020

(SURANJAN SARKAR)